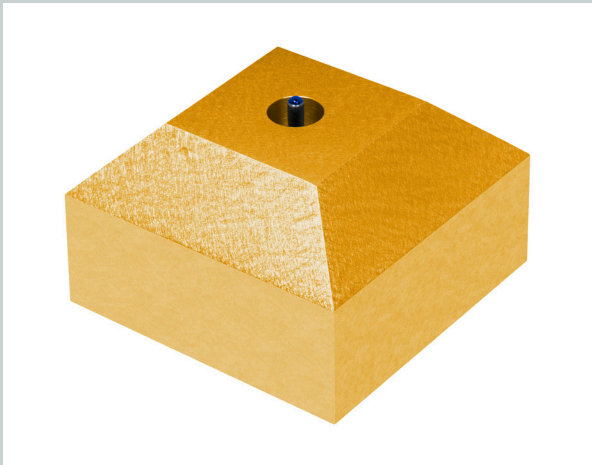


## **BSD Bottom Stamp Dispenser**

- **Would you like to dispense cyanoacrylates (superglue) precisely and without premature bonding?**
- **Would you like to dispense liquids (e.g. primer) precisely and thinly coated on certain surfaces?**

*If yes, we are the right partner for you!*

**BSD dispenser**



**Precise and thin**



Our BSD dispenser is adapted for the dispensing of cyanoacrylates. The "superglue" can be quickly and precisely applied on the component. Effective joining process is carried out fully automatically, if necessary, with the advantage that mating force and jointing time can be optimally adapted to the process. Furthermore, you have the guarantee that the process is accurately repeated. The dispensing unit itself has been designed for low maintenance and simple cleaning when necessary. The glue has no contact with humidity as the system is surrounded by dry air. When device is static and the proper dispensing movement is carried out by the equipment, the space surrounded by dry air is relatively small and the risk that humid air infiltrates is insignificant.

The BSD dispensing device is also well adapted in the area of surface application. Larger surfaces can be precisely wetted within seconds. This application is often used for the preparation of metallic surfaces on the following gluing process: glues based on silicone (e.g. medical adhesives in the medical technology) need an antecedent treatment of the surface with a primer. The primers are often not chemically stable when reacted with humid air. For this reason, the BSD dispensing unit is often surrounded by dry air here also.

The BSD dispensing device can be integrated either into our semi automatic TR300 tabletop robot or our automatic RC500 robotic cell. Our robots are specifically adapted for dispensing processes.

Along with the BSD dispensing device, our robots can also be integrated with our volumetric mono-component and two-component dispensers such as NVD, NBD, CFD as well as CD cartridge dispenser.

Do you have a dispensing application? Please feel free to send us sample material and specifications. Our expert will set up the process in our labs and find out the most appropriate dispensing equipment for your material and product.

We are looking forward to hearing from you soon!

Stefan Eidam - Area Sales Manager  
stefan.eidam@mta.ch,  
T +41 (0)32 338 82 82